

ROECO

Bearing Data

Ball Bearing Units

Bearing No. : **CUCF321CE**

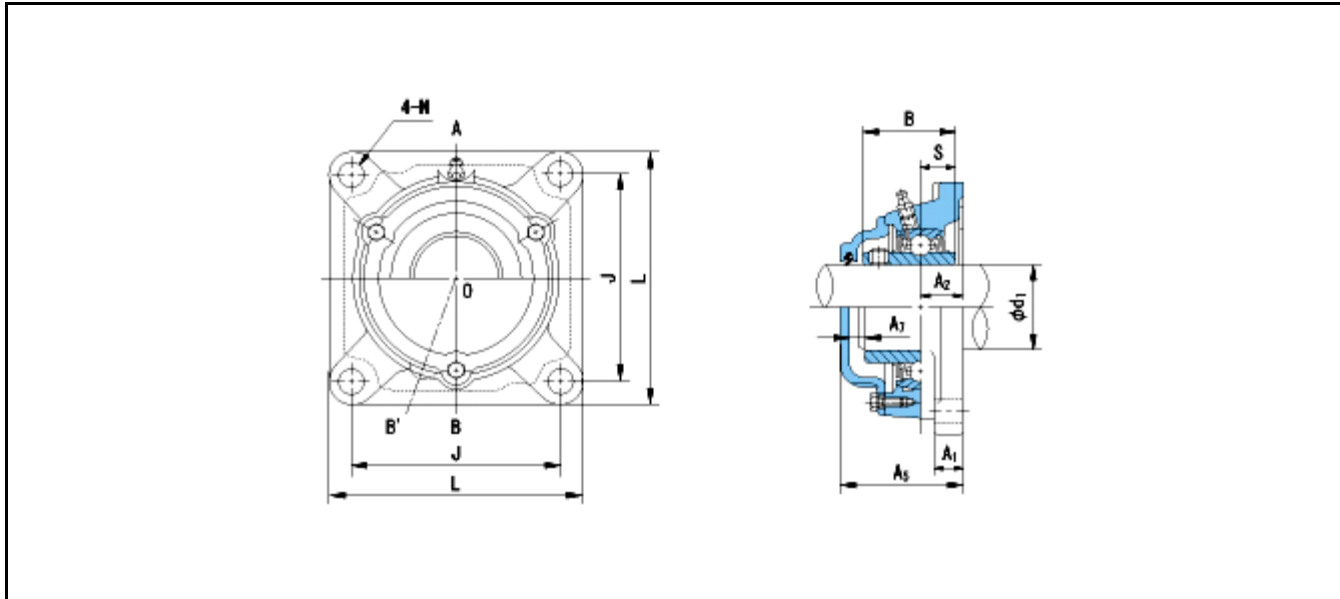
Dimensions

L = 310

J = 242

N = 38

A = 94



Dimensions

d1 = 105

A1 = 32

A2 = 59

B = 112

S = 44

A5 = 156

A7 = 21

Mass = 32.2 kg

Basic Dynamic Load Rating Cr : **183000 N**

Basic Static Load Rating Cor : **153100 N**

Limiting Speed ;

Grease Lubrication : - rpm

Oil Lubrication : - rpm

INNER RING OUTER RING

O.D.Surface Runout with Side : -

Axial Runout with Bore : -

Axial Runout with Raceway : -

Width Variation : -

Radial Runout : -